

KBR  Koester de tijd
Protégeons le temps

OCCLC Contactdag

8 October 2024

The development of KBR's digital offering
or
How to turn difficulties into opportunities

Sophie Vandepontseele
Director Contemporary Collections

Introduction to KBR, the Royal Library of Belgium

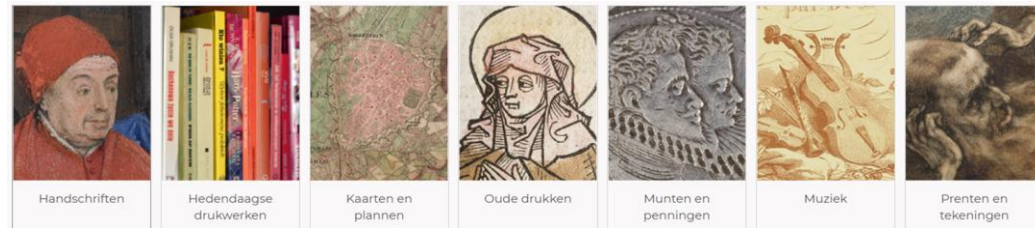


The Royal Library of Belgium is the **national scientific library**.

It collects **all Belgian publications** and preserves, manages and studies an extensive cultural and historical heritage.

It provides the public with **access to information**, facilitates research and offers a broad cultural experience.

Physical collections



- **Manuscripts:** 35,000 manuscripts, including 4,500 codices from the Middle Ages
- **Contemporary printed books:** 5 million printed works, Belgian and foreign, focus on humanities since 2001
- **Newspapers:** more than 2,500 titles (accounting for millions of pages)
- **Maps and plans:** more than 100,000 maps, plans, atlases, globes, ...
- **Rare books:** 300,000 old prints
- **Coins and medals:** more than 220,000 coins, medals, banknotes, decorations, ...
- **Music:** printed and handwritten scores, concert programs, posters, sound documents, ...
- **Prints:** approximately 1 million engravings, drawings, prints, lithographs, photographs, ...
- **Chalcography:** 9,200 engraved plates

Digital collections

1. KBR's digitized collections

DIGIT KBR

- ❖ 25 operators
- ❖ 18 devices including 3 new robot scanners
- ❖ Every type of document can be digitized in-house except audio
- ❖ Funding (approx. 1 million euro per year): 40% external Belspo, 40% own resources, 20% projects
- ❖ Various collaborations (e.g. KU Leuven, ULiège, Ghent, KBR, VEB, ...)

Almost 100,000 documents online

- ❖ Including 127 newspaper titles, accounting for 3.8 million pages
- ❖ Including 161 titles of magazines, accounting for 664,000 pages

The entire collection of 78 rpm is online,

- ❖ representing 60,000 records or 4,000 hours of music.



Digital collections

2. Digital born collections

- ❖ E-repository (web archiving), purchases, subscriptions, Open Access
- ❖ **125 databases** providing access to 772 million documents
- ❖ **79,334 ebooks and 7,623 e-journals** in the catalog
- ❖ 236,300 publications containing 7,300,000 documents in the **Discovery Tool**



What is our legal framework?

The law and the Royal Decree on Legal Deposit

Royal Decree establishing the Royal Library of Belgium as a scientific establishment

What's wrong?

No strategy

No action plan

The description of half of our collections is not online

No decent LMS

Only 10% of our collections is digitized

Legal deposit legislation not adapted to the digital challenge

No digital preservation strategy



Disaster



Strategy action plan 2022-2024

ONDERZOEK

1. Het aantal gegevens en collectiestukken dat in digitaal formaat kan worden geconsulteerd verhogen om de toegankelijkheid van de collecties van KBR te verbeteren

2. Het wetenschappelijk onderzoek in de humane wetenschappen stimuleren en faciliteren

PUBLIEK EN COLLECTIES

3. De diensten aan onderzoekers, zowel ter plaatse als online, op basis van hun huidige behoeften herzien

4. Een globaal en geïntegreerd beleid inzake collectiebeheer ontwikkelen

Overarching goals are to make as much information as possible about and on our collections accessible online

<https://www.kbr.be/nl/actieplan-2022-2024/>

No LMS worthy of this century ?

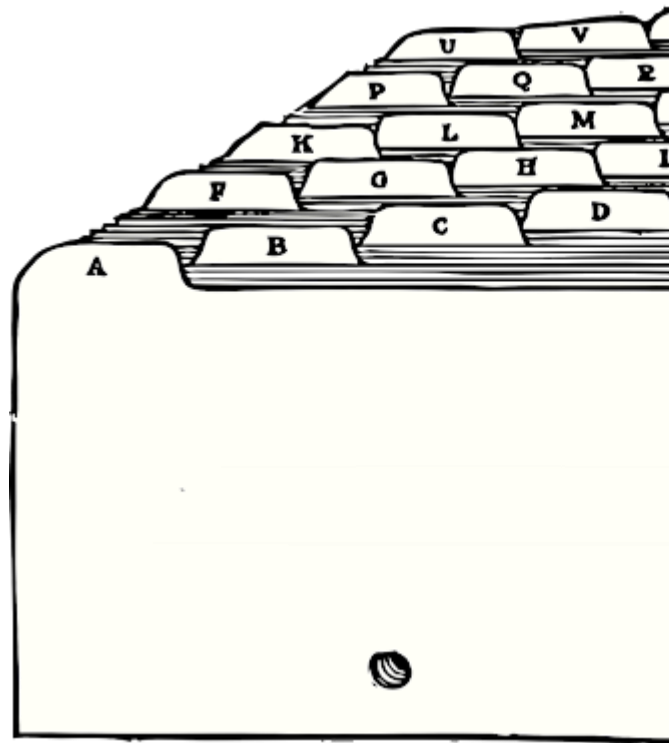
- ✓ Marc home made (KBRMarc)
- ✓ Old Vubis
- ✓ No standard rules





Syracuse and bibliographic transition

- New LMS (2018)
- From ISBD to RDA
- BIBFrame Analysis
- Linked data
- Data enhancement and enrichment



Improving digital access to collections and our digital offering ?



Linked data to be connected to others

Structural investments (longer term)

Persistent Identifiers and PURI

Convert to new data model (BIBFRAME) (in RDF)

RDF publishing, access via SPARQL endpoint, etc.

Some steps have already been taken

RDA, a data model based on IFLA-LRM, to prepare the data for a Linked Data environment

MetaBelgica, which looks to create a shared Linked Data platform for, primarily, individuals and organisations.



KBR joins Worldcat !

- In line with our strategy
- A new service for the public
- Greater visibility for our collections



AI for cataloguing

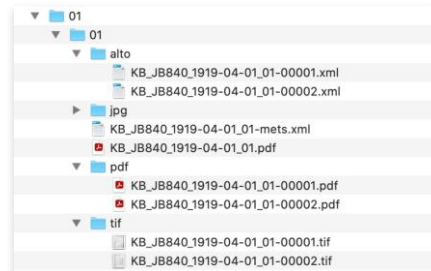
- Opportunity to test AI
- We automate the creation of bibliographic descriptions that are not yet in the catalogue
- We use the same model for the Legal Deposit
- AI is not an end in itself
- Opportunity to review internal working procedures



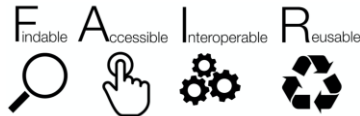
Collections as Data

Collections as Data

Providing data-level access to digital collections is a primary challenge for undertaking digital humanities research. In the United States, the flagship initiatives, '[Always Already Computational: Collections as Data](#)' and '[Collections as Data: Part to Whole](#)', define '*Collections as Data*' as a "conceptual orientation to collections that renders them as ordered information, stored digitally, so that they are inherently amenable to computation". The initiative was established to document, exchange experience and share knowledge to encourage cultural heritage institutions to implement 'collections as data' in their own institutions. DATA-KBR-BE will kick-start the implementation of 'Collections As Data' in Belgium.



<https://collectionsasdata.github.io>



Providing access to the underlying files of digitised cultural heritage resources to facilitate data analysis by means of tools and methods developed in the field of digital humanities

<https://www.kbr.be/en/projects/data-kbr-be/>

Digital data strategy



- Variety of data
- Volume of data
- Data veracity
- Rights
- Volume of requests and service requirements

Ontsluiting tot elektronische bronnen was beperkt

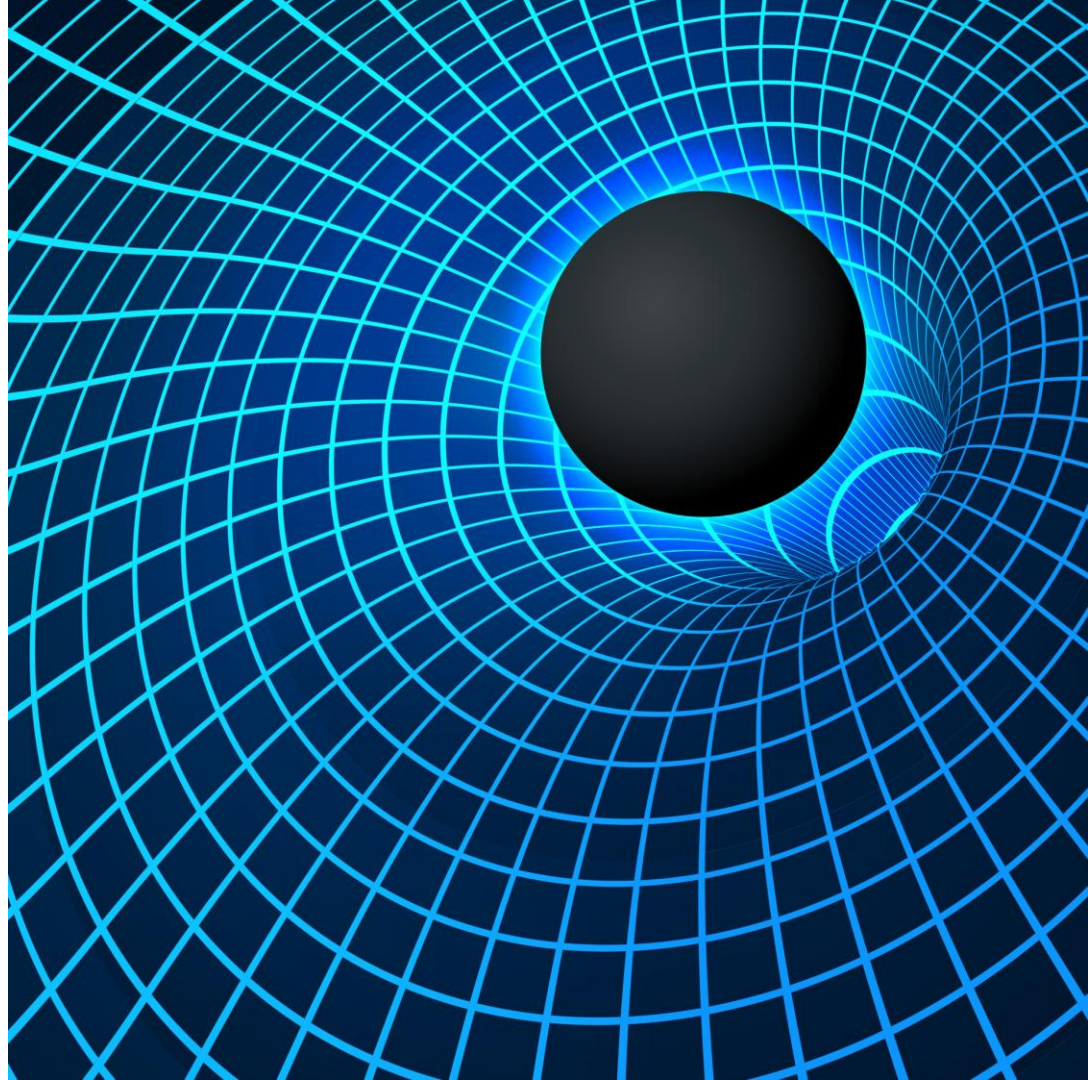
- Gebruikers hebben geen online toegang tot elektronische bronnen wanneer Covid toeslaat
- Behoefte aan een tool voor online toegang
- Overheidsopdracht voor de aankoop van EZ-Proxi
- Overheidsopdracht voor een Discovery Tool om het zoeken naar elektronische bronnen te verbeteren

Google Books Project

- One hundred thousand volumes by 2026
- KBR will supply the books to Google, which will scan them and take care of post-production
- Team of 16 people
- Difficulties with employment contracts
- Development of a monitoring tool



**The digital
black hole
gets bigger
every day**



Legal deposit for digital publications and web archiving is still a long way off

- Setting up the organizational and technical aspects
- Collaboration and consultation with the publishing sector
- Setting up a voluntary deposit for digital publications
- Public contract signed with Internet Archive
- Launch of the first harvests in spring 2025 based voluntary web archiving



Digital Preservation

- Creation of a digital preservation working group
- Hiring an expert in digital preservation (2025)
- Creation of a risk registry and action plan
- Self-assessment based on ISO standard 16363 (trustworthy digital repositories)
- Creation of a policy & strategy



Tools?

GDPR?

WARC?

SIP?

OAIS?

Preservation?

Selection?

Lost in translation?

JSON?

AIP?

DIP?

Copy right?

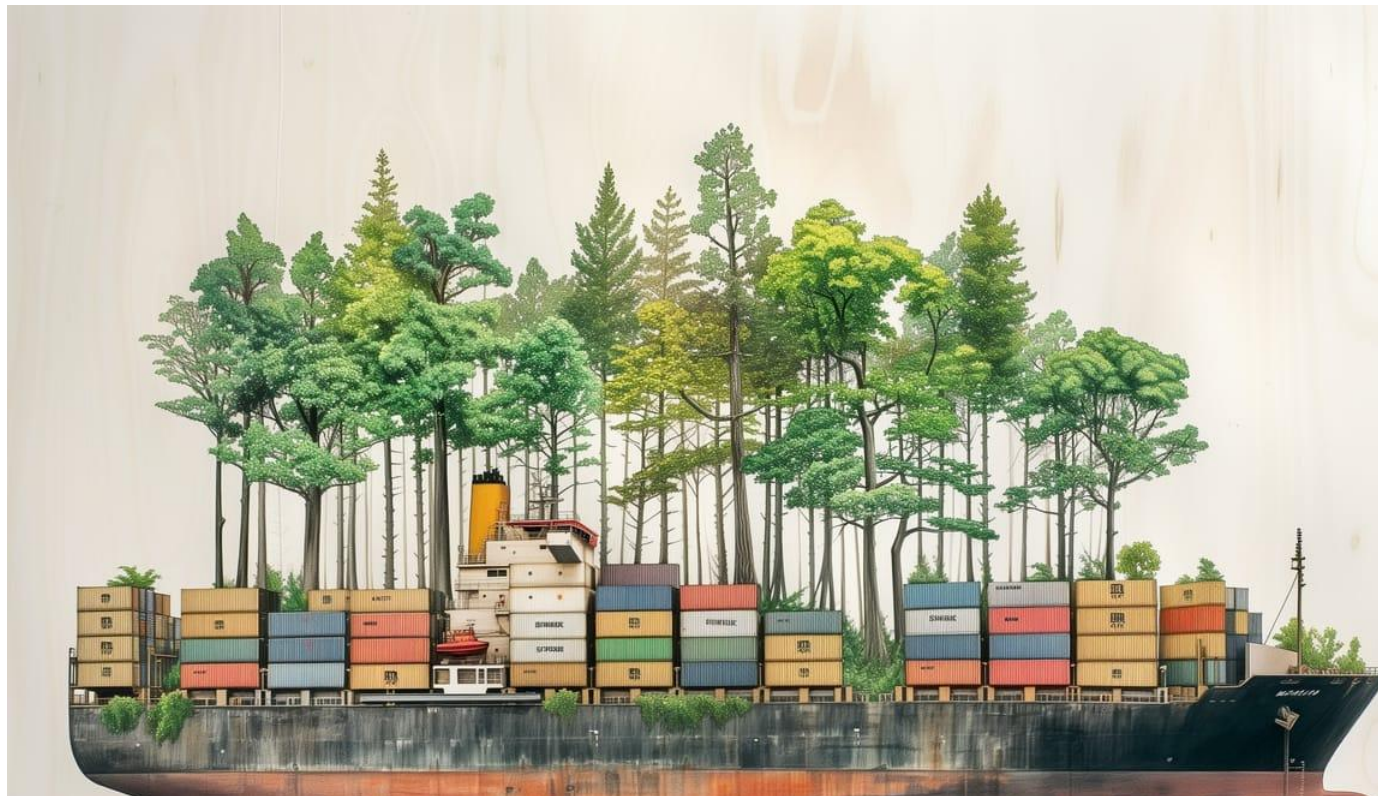
Representativity?

Access?

As a leader, what attitude can we develop to continue innovating and creating in a world of constant change?

How can we continue to win the support of our employees in these conditions?

Developing robustness versus performance for better sustainable results and adaptation to constant change



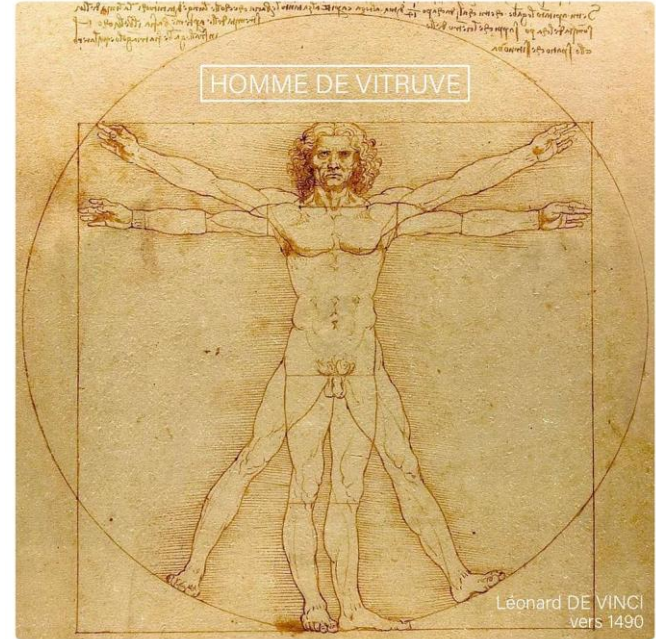
Risk management as a tool

- Procedures are being developed
- Appointment of a risk manager/coordination of organization control
- Ongoing monitoring
- Risk Management Committee



Be Human Centered is a value

- We only replace one person in 6 who retires
- Difficulties in finding technical and IT profiles
- Many challenges
- Making strategic choices
- A painful exercise
- Transparency in decision-making



Towards a new robust and people-centered action plan





Questions?



Thank you!